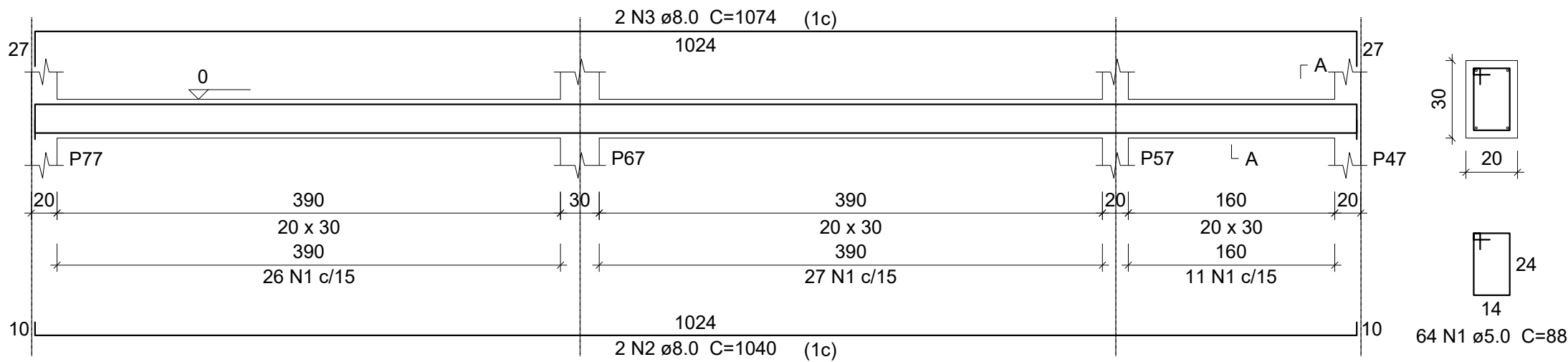
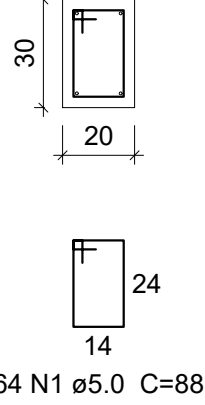


V28

ESC 1:50

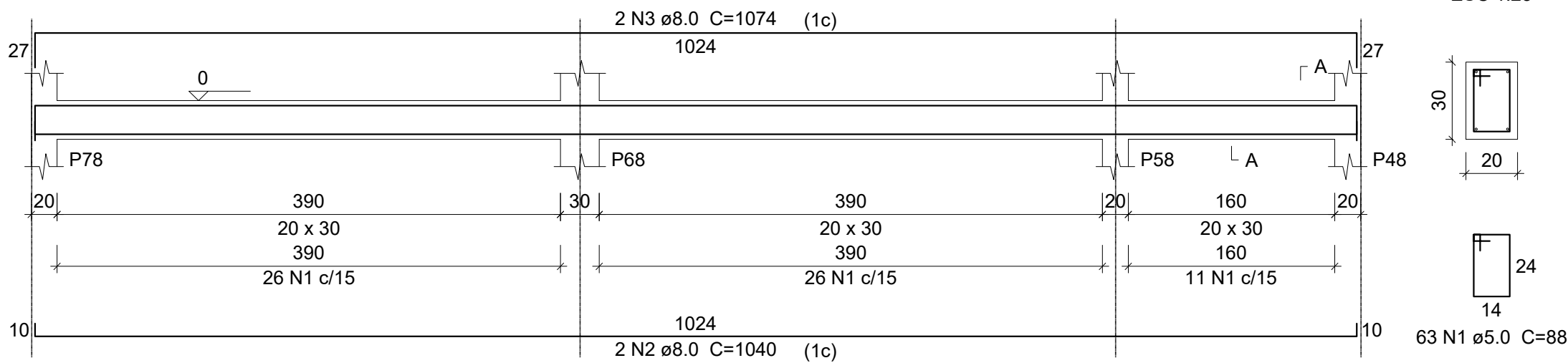


SEÇÃO A-A  
ESC 1:25

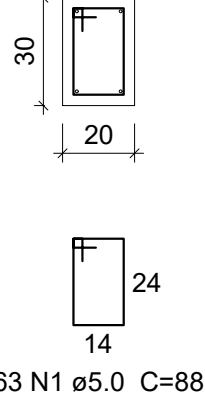


V30

ESC 1:50

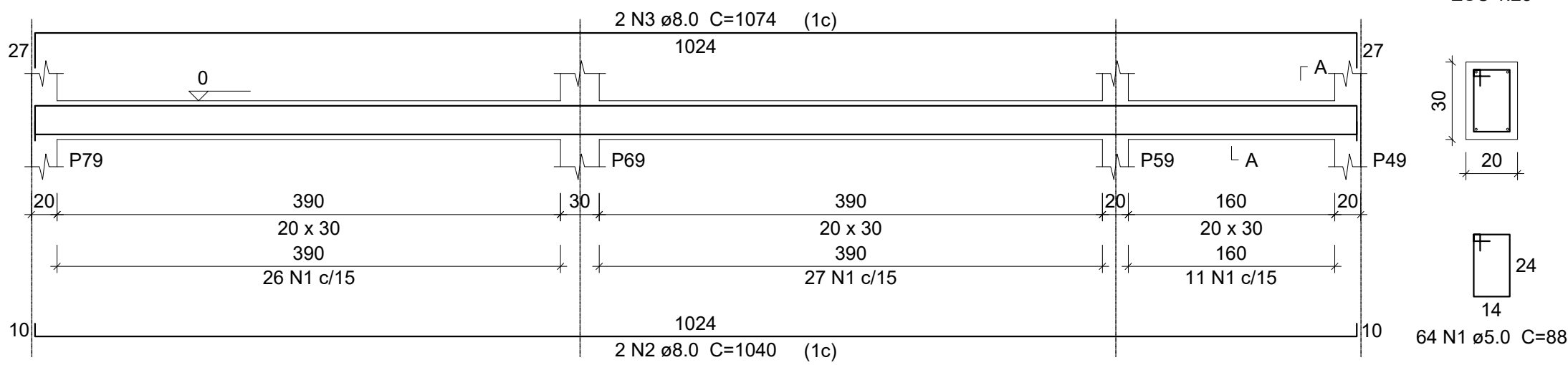


SEÇÃO A-A  
ESC 1:25

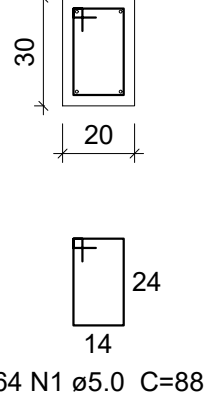


V32

ESC 1:50

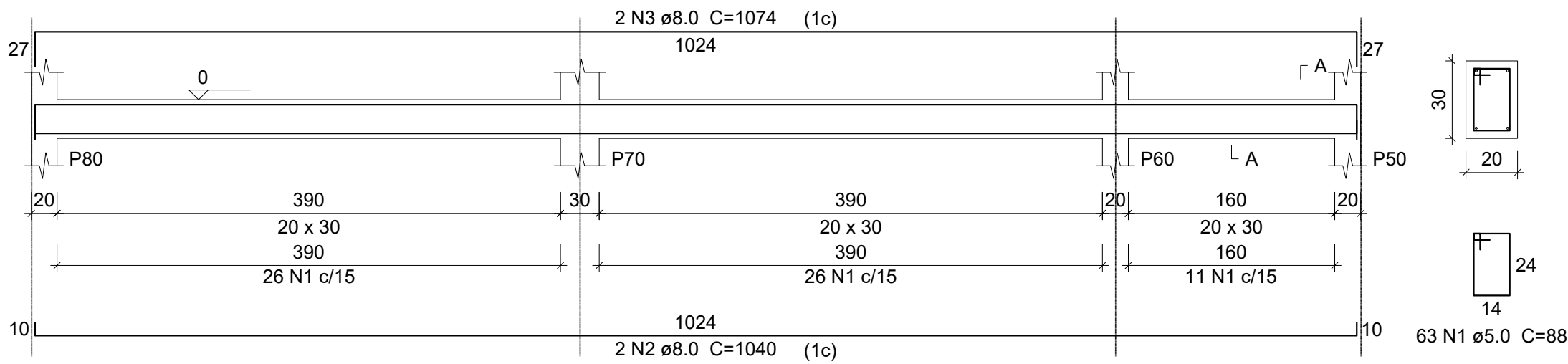


SEÇÃO A-A  
ESC 1:25

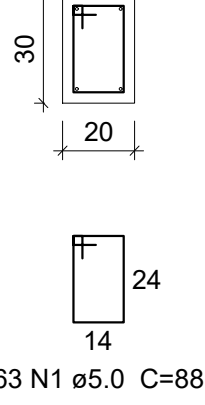


V34

ESC 1:50

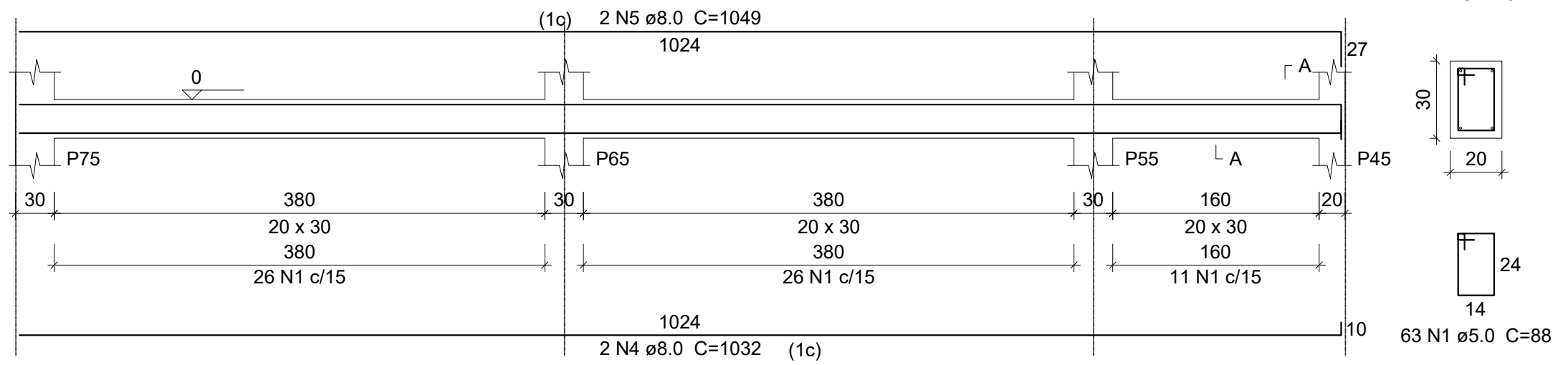


SEÇÃO A-A  
ESC 1:25

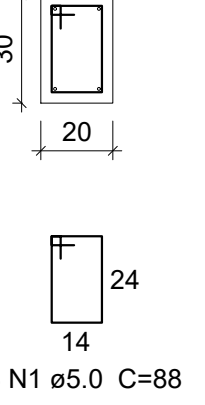


V36

ESC 1:50

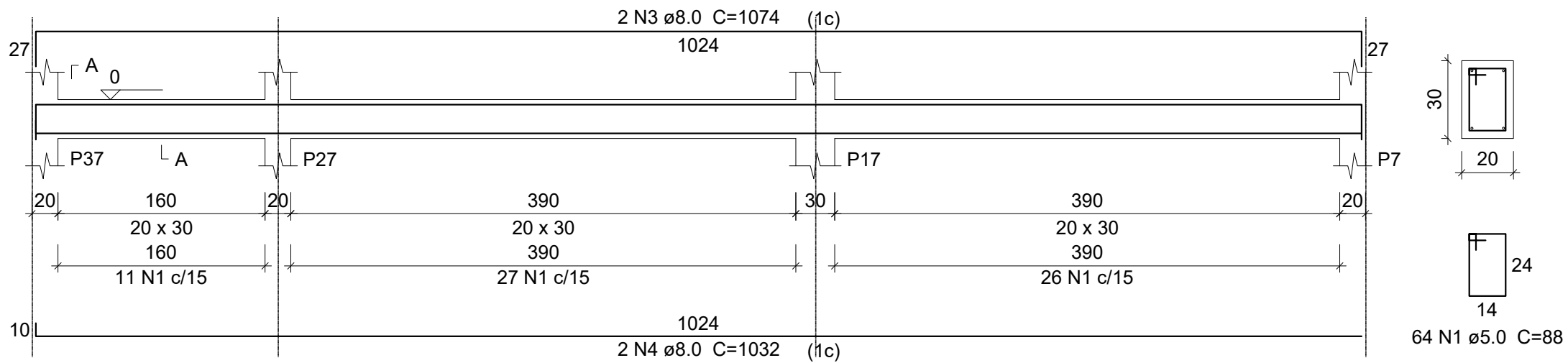


SEÇÃO A-A  
ESC 1:25

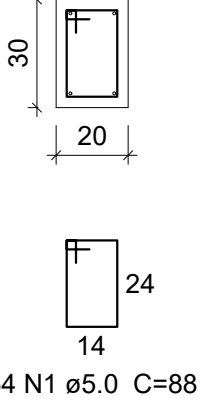


V29

ESC 1:50

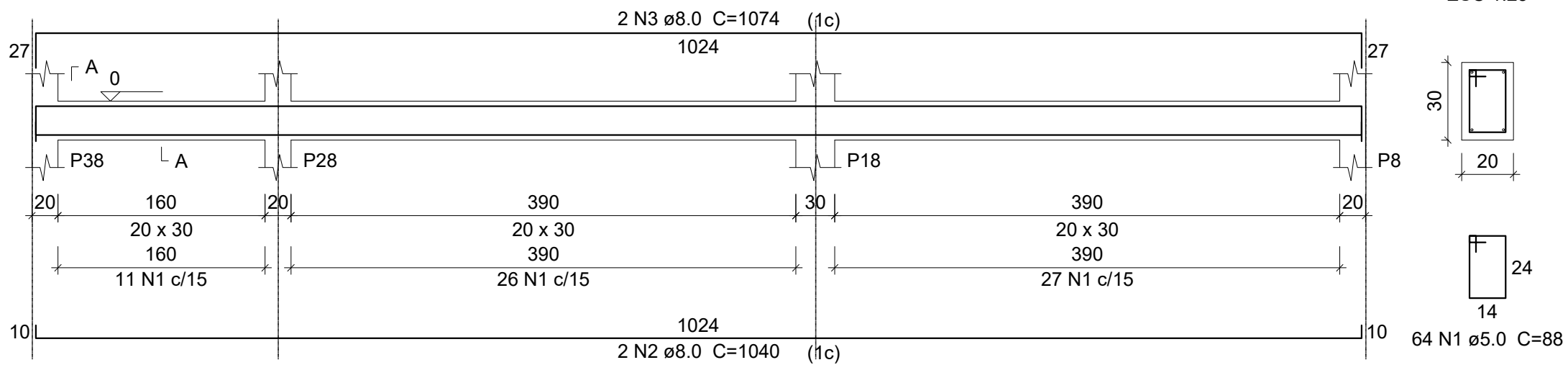


SEÇÃO A-A  
ESC 1:25

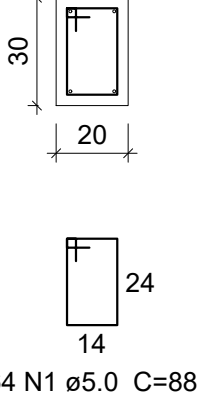


V31

ESC 1:50

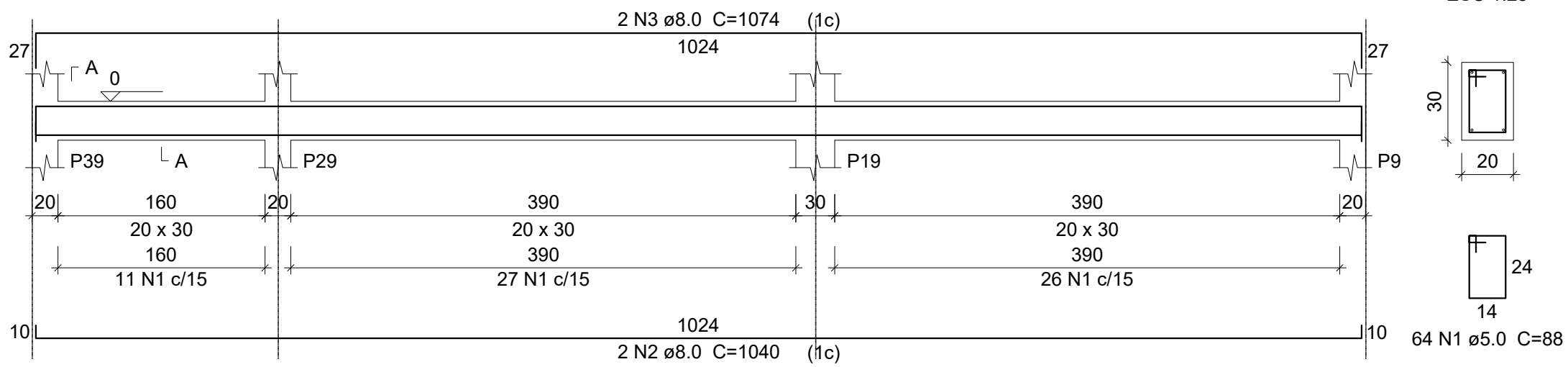


SEÇÃO A-A  
ESC 1:25

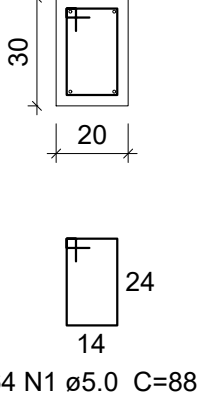


V33

ESC 1:50

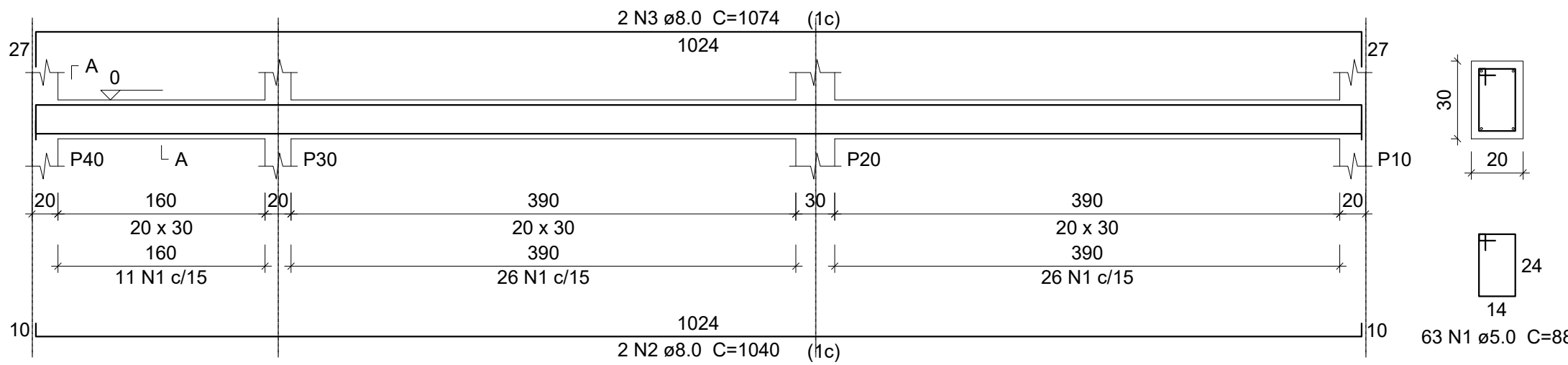


SEÇÃO A-A  
ESC 1:25

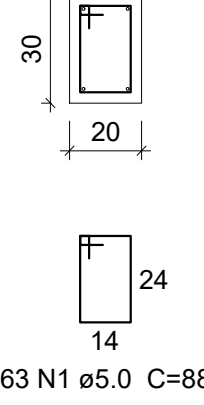


V35

ESC 1:50

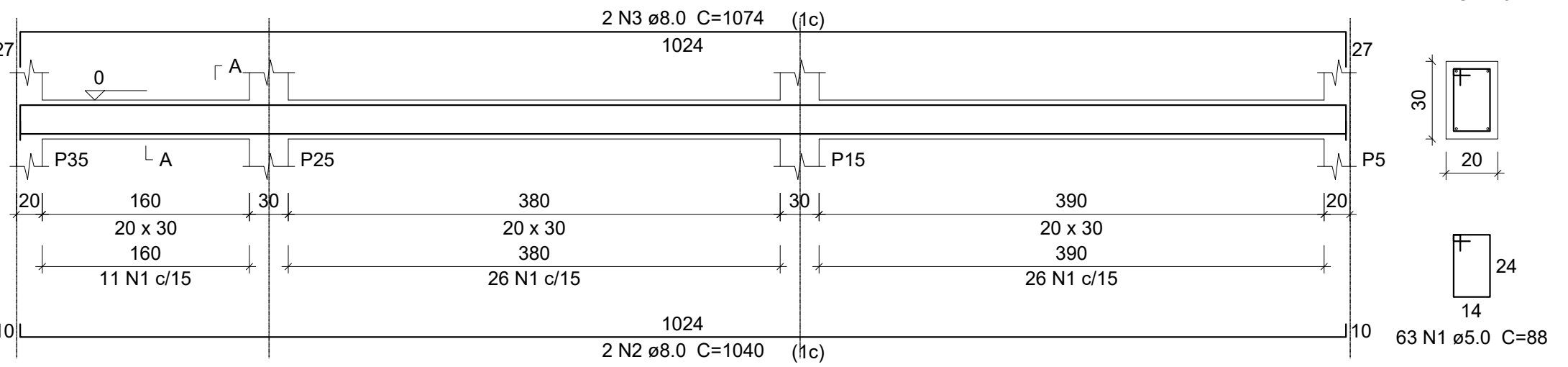


SEÇÃO A-A  
ESC 1:25

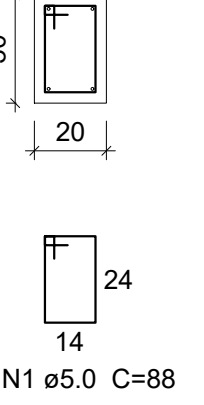


V37

ESC 1:50



SEÇÃO A-A  
ESC 1:25



Relação do aço

V28	V29	V30
V31	V32	V33
V34	V35	V36
V37		

AÇO	N	DIAM (mm)	QUANT	C.UNIT (cm)	C.TOTAL (cm)
CA60	1	5.0	635	88	55880
CA50	2	8.0	16	1040	16640
	3	8.0	18	1074	19332
	4	8.0	4	1032	4128
	5	8.0	2	1049	2098

Resumo do aço

AÇO	DIAM (mm)	C.TOTAL (m)	PESO + 10 % (kg)
CA50	8.0	422	183.2
CA60	5.0	558.8	94.7
PESO TOTAL (kg)			
CA50	183.2		
CA60	94.7		

Volume de concreto (C-25) = 6.18 m³  
Área de forma = 82.4 m²



Prefeitura

Campos de Júlio



Semeando

desenvolvimento

Departamento de Engenharia

Avenida Valdir Mazutti, nº 1999, Bom Jardim - Campos de Júlio  
Fone:0xx65-3387-2800

Obras: CONSTRUÇÃO DE CENTRO DE EDUCAÇÃO INFANTIL COM 14 SALAS DE AULA Localizado na Av. Gov. Júlio Campos Quadra 01

Área: Área à Construir 1.967,40 m²

Prefeitura Municipal de Campos de Júlio

Responsável Técnico LUIZ CARLOS CORREIA DE OLIVEIRA CREA: 1202470122

Conteúdo: ESTRUTURAL COBERTURA LAJE EIXO y

DECLARO QUE A APROVAÇÃO DO PROJETO NÃO IMPLICA NO RECONHECIMENTO POR PARTE DA PREFEITURA DO DIREITO DE PROPRIEDADE DO TERRENO.

Data: MAIO/2022

Escala: INDICADAS

Desenho: CINTYA VIEIRA SOUTO

Folha: